

ANDREA WINKLER

SELECTED PROJECTS AND INSTALLATION VIEWS

[www.andreawinkler.org](http://www.andreawinkler.org)

Following pages: Installation views

## UNTITLED (THE FOREST – EP.1 – RUST)

Motorbike helmet, leather skin, 100 cm x 25 cm x 70 cm; motorbike helmet, leather skin, carbon fibre, 70 cm x 25 cm x 70 cm; motorbike helmet, silicone, pizza delivery bag, pizza box, 42 cm x 55 cm x 38 cm; leggings, styrofoam, plastiform, air brush, 46 cm x 45 cm x 36 cm; stanchion, steel chain, silicone, 30 cm x 100 cm x 30 cm; various dummy legs, carbon fibre, leggings, 120 cm x 20 cm x 32 cm;









Following pages: Installation views

## WHERE ARE WE NOW

n.b.k. – Neuer Berliner Kunstverein, 2016

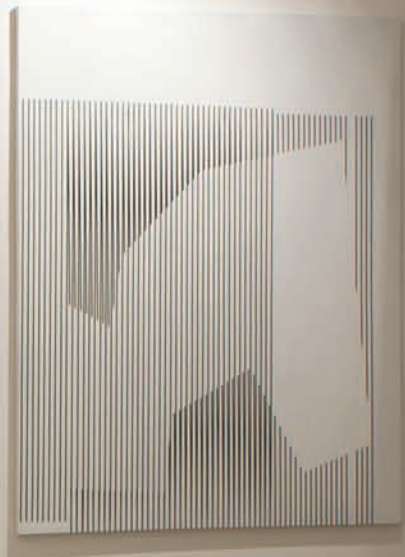
UNTITLED (WHERE ARE WE NOW), 2016: UNTITLED, 2016, motorbike helmet, carbon fibre, sheep skin, 100 cm x 25 cm x 70 cm; UNTITLED, 2016, motorbike helmet, silicone, 30 cm x 25 cm x 25 cm; BAGS #08, 2013, handbag, beach tent, 33 cm x 27 cm x 30 cm, stanchion, 88 cm x 35 cm, stanchion 95 cm x 30 cm, Styrofoam thermal food box, 45 cm x 45 cm x 35 cm; BAGS #37, 2016, handbag, bumbag, 38 cm x 25 cm x 30 cm











Following pages: Installation views

## POOLHOUSE PRICE FOR YOUNG ART Poolhaus, Hamburg, 2015

UNTITLED, 2015, motorbike helmet, 50s GDR coffee table, 71 cm x 25 cm x 50 cm; UNTITLED, 2015, display leg, carbon fibre, 75 cm x 35 cm x 15 cm; GLES EESE A NION, 2015, Pringles can, lacquer, lashing strap, 30 cm x 6 cm; 0,0000097, 2015, motorbike helmet, glass fibre, thermal food container, 68 cm x 70 cm x 25 cm; BAGS # 14, 2013, handbags, 50 cm x 40 cm x 35 cm; SHOEL, 2015, motorbike helmet, jacket, mirror, cardboard box, 58,5 cm x 59,5 cm x 65 cm; BAGS # 30, 2014, handbags, 58 cm x 42 cm x 21 cm; 0,00000123, 2015, motorcycle helmet, carbon fibre, 33 cm x 24 cm x 25 cm; 0,00000016, 2015, motorcycle helmet, carbon fibre, pizza delivery bag, 41 cm x 36 cm x 50 cm; Untitled, 2015, cargo net, wool, bondage rope, camouflage net, acrylic lacquer, approx. 4 m x 1,5 m; UNTITLED, 2015, Stardur wall elements, 12 m x 3,4 m; light bulb; I GUESS I NEED YOU BABY, 2015, iPhone-HD, 1:58 min.













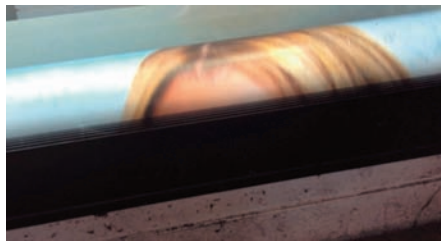
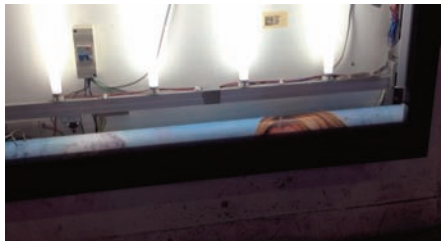
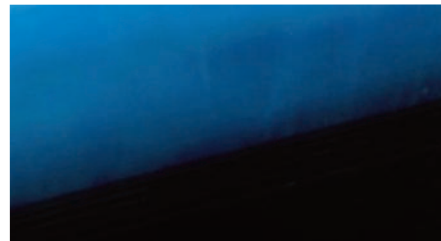
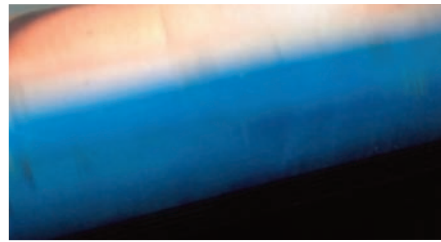
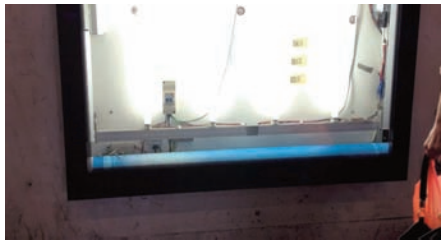
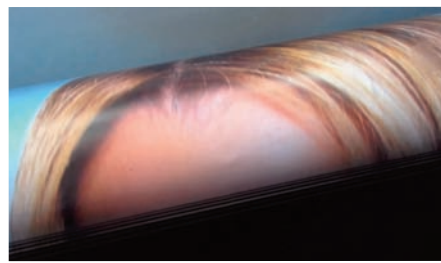
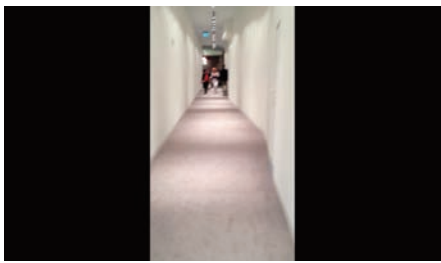








0130  
010  
2208  
01C



Installation views and details of

## SHOP 1+2

### filmsets for FREEROAM A REBOUR, 2016

SHOP 1: honeycomb board, motorcycle helmets, carbon fibre, pizza delivery bags, display leg, PET-bottles, shisha tube, stones, construction foam, knee pads, rubber tubes, hi-vis safety vests, ropes, elastic belt bag, handbag, bum bag, back packs, T-shirts, air brush, used firecrackers, jeans short, coat hanger, polystyrol mirror, wall paint, stainless steel tube, accessory cord, dance floor, lighting; sizes of pedestals: 120 cm x 120 cm x 68 cm; 100 cm x 100 cm x 58 cm; 120 cm x 120 cm x 48 cm; 120 cm x 120 cm x 38 cm

SHOP 2: crowd control systems, »Deliveroo« food delivery back packs, pizza delivery bags, backpacks, shisha pipe, beachflags, chains, acrylic laquer, silicone cast, car headlights, rescue foil, PET-bottles, shisha tube, stones, knee pads, rubber tubes, hi-vis safety vests, ropes, elastic belt bag, stainless steel tube, accessory cord, sleeping bag, dance floor, lighting; spatial extension: 10 m x 13 m







Installation views and details of

## DARKENING PROBLEMS

Acme Studios/Landis & Gyr, London, 2015

0,00000123, 2015, motorcycle helmet, carbon fibre, 33 cm x 24 cm x 25 cm;  
0,00000016, 2015, motorcycle helmet, carbon fibre, pizza delivery bag, 41 cm x  
36 cm x 50 cm; isolated food container 68 cm 40 xm 35 cm; dummy fragment,  
tape, 110 cm x 35 cm x 18 cm; Untitled, 2015, Silicone cast of pepper mill, rope,  
20 cm x 6 cm x 6 cm







Following pages: Installation views

**BEING HERE & BEING THUS. SCULPTURE,  
OBJECT & STAGE**  
Frankfurter Kunstverein 2014

SHORT LETS CONSIDERED, 2014, various crowd control systems, chains, karabiners, acrylic lacquer, styrofoam, beach flag, handbags, beach tent, suitcase, elastic straps  
spatial dimension: 8 m x 6 m x 3,2 m











Following page: Installation views

## CHAT JET (PART 2) – SCULPTURE IN REFLECTION KM – Künstlerhaus. Halle für Kunst und Medien, Graz, 2014

SHORT LETS CONSIDERED III – (HERMITS), 2014, various crowd control systems, chains, karabiners, display hook, acrylic lacquer, styrofoam, beach flag, XL travel bag, handbag, rolling suitcase, women's sport apparel  
spatial dimension: ca. 13 m x 8 m x 3,2 m



Following pages: Installation views

## CARTE BLANCHE: ANDREA WINKLER

### Aargauer Kunsthaus, 2014

BAGS, 2014, handbags, backpacks, suitcases, elastic straps, foulards, fly screens, karabiners, sneakers, rope, waterproof laptop sleeve, belts, beach tent; crowd control systems, size of platform: 555 cm x 385 cm x 14 cm

STUDIES HORIZONTAL, 2014, frame, wood, paint, silikon and resin casts of EAS security tags, EAS-security tags, sunglass lens, vitrine, hi-vis security jacket; various crowd control systems, sizes of vitrines: 72,5 cm x 56 cm x 10 cm; 71,5 cm x 56 cm x 8 cm; 80 cm x 30 cm x 7 cm; 210 cm x 150 cm x 12 cm



























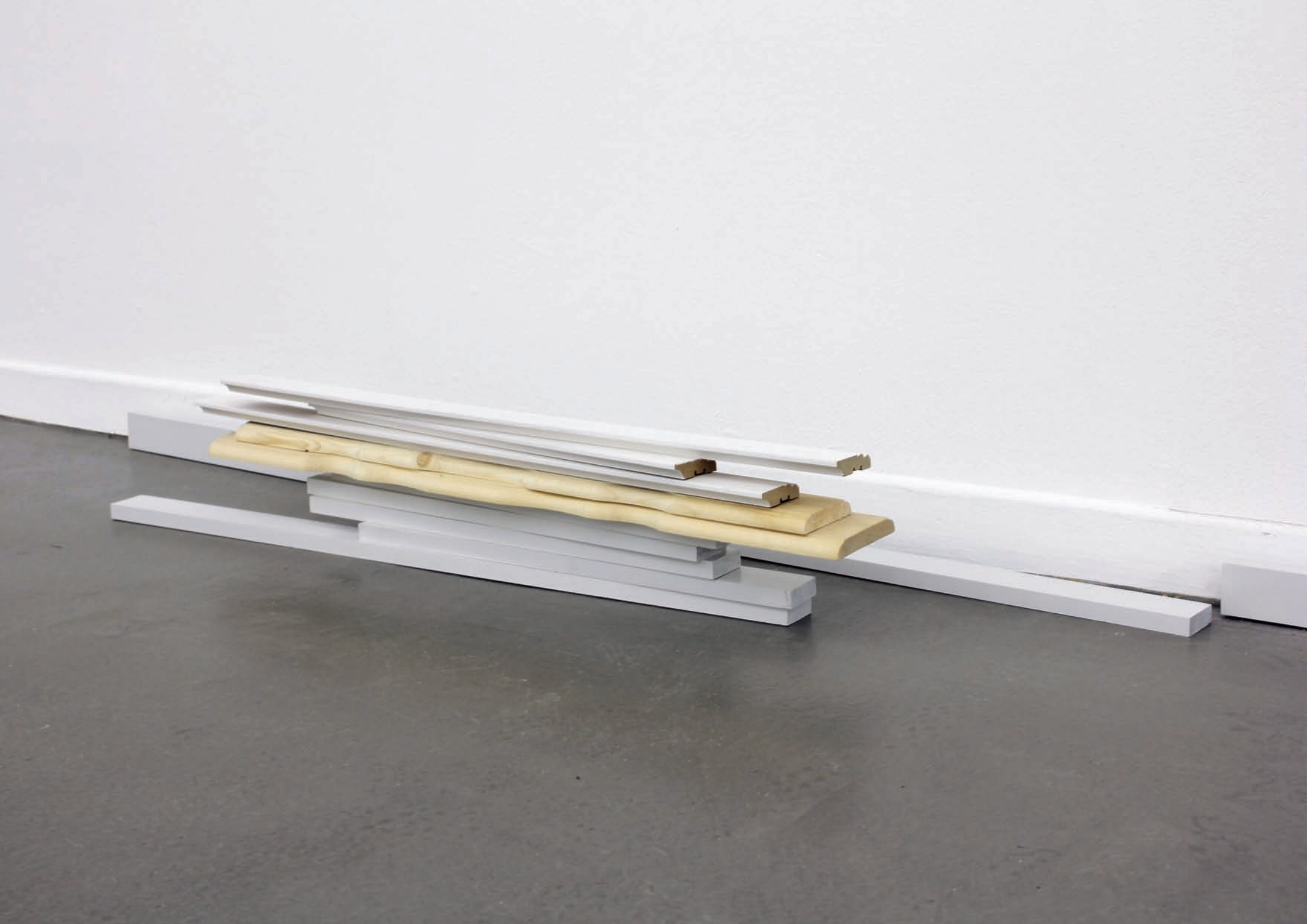


Following pages: Installation views

## GRANT HOLDERS OF THE 31st. WORK GRANT OF THE FREE AND HANSEATIC CITY OF HAMBURG Kunsthaus Hamburg, 2012

UNTITLED, 2012, acrylic lacquer on wooden strips, wooden slats for balcony fence »Munich«, skirting boards, acrylic lacquer, MINIATURE REPRODUCTION “AFTER MIKE KELLEY’S “FRAMED AND FRAME (MINIATURE REPRODUCTION “CHINATOWN WISHING WELL” BUILT BY MIKE KELLEY AFTER “MINIATURE REPRODUCTION ‘SEVEN STAR CAVERN’ BUILT BY PROF. H. K. LU”, 1999, 2011, c-print, 109 cm x 81 cm







Following pages: Installation views

## TILL THE SMOKE GOES OUT o.T. – Raum für aktuelle Kunst, Luzern, 2013

TILL THE SMOKE GOES OUT, 2013: various crowd control systems, chains, karabiners, acrylic lacquer, key rings, nails, styrofoam, frame, wood, perspex, aluminum foil, magazine pages, EAS security tags, ink jet prints, cardboard, printed fabric, spatial extension: 12 m x 9 m x 3,2 m









Chandi Bloom issue 16 autumn/winter 2001  
photography Craig McDean Opposite Mc  
Allen The Nile issue 5 spring/summer 19  
photography Shaphie Sadra

Following pages: Installation views

## PATRICIA

Gerhardsen Gerner Berlin, 2012

PATRICIA, 2013: UNTITLED, 2011, paper, nail polish, magazine page, stanchion, chain, karabiners, key rings, acrylic lacquer, 164 cm x 320 cm x 196 cm; UNTITLED, 2011, inkjet prints, styrofoam, wood, construction foam, cardboard, one-way mirror foil, 120 cm x 140 cm x 100 cm; UNTITLED, 2011, inkjet prints, styrofoam, wood, construction foam, cardboard, one-way mirror foil, 98 cm x 140 cm x 100 cm; UNTITLED, 2011, acrylic lacquer, ca. 150 cm x 70 cm; UNTITLED, 2011, stanchions, karabiners, acrylic lacquer, 420 cm x 760 cm x 130 cm; UNTITLED, 2011, inkjet prints, styrofoam, wood, construction foam, cardboard, one-way mirror foil, 98 cm x 140 cm x 100 cm; UNTITLED, 2011, acrylic lacquer, here approx. 150 cm x 30 cm; UNTITLED, 2011, posts, karabiners, chains, key rings, acrylic lacquer, dim var.; MINIATURE REPRODUCTION "AFTER MIKE KELLEY'S "FRAMED AND FRAME (MINIATURE REPRODUCTION "CHINATOWN WISHING WELL" BUILT BY MIKE KELLEY AFTER "MINIATURE REPRODUCTION 'SEVEN STAR CAVERN' BUILT BY PROF. H. K. LU", 1999, 2011, c-print, 109 cm x 81 cm; Untitled, 2011, magazine page, paper clip, 30 x 22 cm



